



DUPAGECOUNTY

2024 CAPITAL IMPROVEMENT PLAN



421 N. County Farm Road, Wheaton IL 60187
(630) 407-6023 • www.dupagecounty.gov



**DUPAGE
COUNTY**

DEBORAH A. CONROY
County Board Chair

630-407-6060
chair@dupagecounty.gov

Dear Elected Officials,

I am pleased to share with you the 2024 DuPage County Capital Improvement Plan.

As you are aware, DuPage County is responsible for a sizeable portion of our local infrastructure including the operation of seventeen countywide flood control facilities, 220 miles of highways, and 92 miles of multi-use trails. Additionally, DuPage County operates the DuPage Care Center, the County Jail, the 18th Judicial Circuit Court, the DuPage Animal Shelter, and provides water and sewer services to over 200,000 DuPage residents.

I hope you will take time to review the unique Flood Control, Transportation, County Infrastructure, Environmental, and Water & Sewer projects included in this plan. Once completed, these projects will reduce flooding for homeowners and businesses, relieve traffic congestion, enhance public health and safety, and improve water quality for the almost one million county residents.

On behalf of the DuPage County Board, please accept our thanks for your continued advocacy and support.

Regards,

Deborah A. Conroy
Chair
DuPage County Board



THE COUNTY OF DUPAGE

CAPITAL IMPROVEMENT PLAN

Environmental	2
County Infrastructure	5
Transportation	11
Flood Control	14
Water & Sewer	18

a great place to live, work and raise a family



THE COUNTY OF DUPAGE

ENVIRONMENTAL

County Campus Food Scrap Composting3

Electric Vehicle Charging Stations4

a great place to live, work and raise a family



COUNTY CAMPUS FOOD SCRAP COMPOSTING — WHEATON, IL

PROJECT DETAILS

LOCATION

City of Wheaton

ISSUE

County Campus cafeterias and jail generate food scraps that generate GHG emissions when landfilled.

SOLUTION

Collect food scraps and compost in an aerobic digester.

BENEFIT

Composted food scraps reduce GHG emissions from food waste & creates an eco-friendly soil amendment.

COST ESTIMATE

\$170,000

DISTRICTS REPRESENTED

US Representative Districts
3, 4, 6, 8, & 11

IL Senate Districts
4, 21, 23, 24, 25, 28, 33, 39,
41, 42, & 43

IL Representative Districts
7, 41, 42, 45, 46, 47, 48, 49,
50, 56, 65, 77, 81, 82, 84, &
85

County Board Districts
1, 2, 3, 4, 5, & 6



PROJECT HISTORY & INFORMATION

DuPage County has three cafeterias operated by the Care Center's Dining Services. Food is prepped and distributed to patients in the Care Center and then sold to employees and the public in cafeterias in the JTK Administration Building and the Judicial Office Facility. Food is also prepped in the jail for inmates.

Due to these activities, the County generates more than 400 lbs. of food waste on a daily basis.

U.S. EPA has prioritized the composting of food as a method to reduce greenhouse gas

emissions in the U.S. The EPA estimates that each year U.S. food loss and waste embodies 170 million metric tons of GHG emissions.

Research has found that methane emissions from food waste in landfills far exceeds emissions generated from composting.

A composting program could reduce the County's emissions more than 47.45 tons of CO₂eq annually.



PROJECT DETAILS

LOCATION

Cities of Winfield & Wheaton

ISSUE

The County is currently unable to serve the demand for EV charging.

SOLUTION

Install two level 3 charging stations at the campus for visitors.

BENEFIT

Supports the transition to electric vehicles.

COST ESTIMATE

\$350,000

POLITICAL DISTRICTS

US Representative Districts
3, 4, 6, 8, & 11

IL Senate Districts
4, 21, 23, 24, 25, 28, 33, 39,
41, 42, & 43

IL Representative Districts
7, 41, 42, 45, 46, 47, 48, 49,
50, 56, 65, 77, 81, 82, 84, &
85

County Board Districts
1, 2, 3, 4, 5, & 6

ELECTRIC VEHICLE CHARGING STATIONS FOR ANIMAL SERVICES, CARE CENTER & ADMIN. BLDG



PROJECT HISTORY & INFORMATION

DuPage County operates Animal Services for the shelter care of strays and animals without homes. The County also operates the DuPage Care Center that provides Long-Term Care and Short-Term Rehabilitative Care to individuals needing support with their activities of daily living. Both are supported by foundations to raise additional funding for the services they provide.

The Care Center and Animal Services are visited by the public and volunteers on a daily basis. The County currently has one level two charging station that is across County Farm Rd which is a

four-lane road. Use of the charging station is difficult for those visiting these buildings.

The County would like to install one ADA compliant level 3 charging station near Animal Services and the Care Center and one ADA compliant level 3 charging station in the parking lot of the Administration Building. The level 3 fast charging stations could also benefit commuters that are moving around the County using IL Rt 38 and IL Rt 64.



THE COUNTY OF DUPAGE

COUNTY INFRASTRUCTURE

Animal Services Projects.....	6
DuPage County Care Center Projects.....	7
Crisis Recovery Center	8
Sheriff's Work Alternative Program Building	9
Correctional Facility Cell Door Replacement.....	10

a great place to live, work and raise a family



ANIMAL SERVICES — PROJECTS

PROJECT DETAILS

LOCATION

Animal Services Shelter
Wheaton, IL

ISSUE

Current expansion project
opportunities

SOLUTION

Additional project items that
would support and enhance
the Animal Services Shelter

BENEFIT

New shelter that mirrors
growing trend toward
humane, fear-free animal
shelter/community center

DISTRICTS REPRESENTED

US Representative Districts
3, 4, 6, 8, & 11

IL Senate Districts
4, 21, 23, 24, 25, 28, 33, 39,
41, 42, & 43

IL Representative Districts
7, 41, 42, 45, 46, 47, 48, 49,
50, 56, 65, 77, 81, 82, 84, &
85

County Board Districts
1, 2, 3, 4, 5, & 6



PROJECT HISTORY & INFORMATION

DuPage County Animal Services is a self-funded immediate open admission animal shelter caring for more than 2,300 animals annually of all species. Originally built in 1978, it is currently being expanded to address critical needs.

Items not included in the original expansion project scope but could be addressed with additional funding:

Back-up Generator

- Animal Services previously shared a back-up generator with (2) nearby buildings
- New addition requires larger electrical service, making existing back-up capabilities inadequate
- New expansion electrical system has been designed to accommodate a future standalone generator for Animal Services
- Current estimate for generator and associated work: **\$366,456**

Existing Building Roof Replacement

- Existing Animal Services building has an asphalt shingle roof approaching end-of-life
- Not included in original addition project scope to reduce budget
- Replacement with standing seam metal roof would provide longer-term protection and future capabilities to host solar panels on its surface
- Current estimate for roof replacement: **\$193,951**

Solar [Photovoltaic] Panel Additions

- If existing roof replaced during current construction project, it would be an ideal location to host PV panels
- New expansion electrical system and room has been designed to accommodate future PV panels
- Current estimate for roof PV system: **\$240,000-\$290,000**



PROJECT DETAILS

LOCATION

DuPage Care Center
Wheaton, IL

ISSUE

Additional project
opportunities

SOLUTION

Additional project items that
would support and enhance
the Care Center

BENEFIT

Improved electrical systems
and back-up capabilities

DISTRICTS REPRESENTED

US Representative Districts
3, 4, 6, 8, & 11

IL Senate Districts
4, 21, 23, 24, 25, 28, 33, 39,
41, 42, & 43

IL Representative Districts
7, 41, 42, 45, 46, 47, 48, 49,
50, 56, 65, 77, 81, 82, 84, &
85

County Board Districts
1, 2, 3, 4, 5, & 6



PROJECT HISTORY & INFORMATION

The DuPage Care Center serves a primarily indigent population with up to 80% of residents relying on Medicaid to pay for their care. The Care Center is currently undergoing extensive renovations that will greatly improve the quality of life for our 224 elderly and/or disabled residents.

Items not included in the original renovation project scope but could be addressed with additional funding:

Solar [Photovoltaic] Panel Additions

- *Care Center North* building roof has a relatively new roofing membrane, and an ideal location to host roof-mounted PV panels
- *Care Center North* building electrical system and room would require improvements to accommodate PV panels
- Current estimate for roof PV system and associated work: **\$275,000-\$310,000**

Back-up Generator and Switchgear Replacements

- *Care Center North* building currently shares a back-up generator with a neighboring building
- Generator is in need of replacement, and *Care Center North* would be provided its own standalone generator and associated switchgear
- *Care Center East* building generator and switchgear are in need of replacement as well
- Current estimate for generators and associated work: **\$2,400,000**



DUPAGE COUNTY HEALTH DEPARTMENT CRISIS RECOVERY CENTER

PROJECT DETAILS

LOCATION

Crisis Recovery Center
Wheaton, IL

ISSUE

Project construction and
operations

SOLUTION

Additional project items that
would support and enhance
the CRC

BENEFIT

Providing local residents with
crisis recovery services for
mental health and substance
use treatment

DISTRICTS REPRESENTED

US Representative Districts
3, 4, 6, 8, & 11

IL Senate Districts
4, 21, 23, 24, 25, 28, 33, 39,
41, 42, & 43

IL Representative Districts
7, 41, 42, 45, 46, 47, 48, 49,
50, 56, 65, 77, 81, 82, 84, &
85

County Board Districts
1, 2, 3, 4, 5, & 6



PROJECT HISTORY & INFORMATION

The Crisis Recovery Center (CRC) is the critical next step in DuPage County Health Department's decades-long journey to build the infrastructure needed to support a best-in-class behavioral health system.

The CRC will help residents de-escalate, stabilize, and connect to community resources catered to their individual mental health and substance use treatment needs. The building design and operations will ensure individuals and their families feel welcome, respected, and secure throughout every step of their care. The CRC serves as an alternative to hospital emergency departments and simplifies access for all individuals, families, and first responders.

The design and operations are an ongoing collaborative process between the Health Department,

municipalities, health systems, community mental health and substance use partners, law enforcement, fire/EMS, and the judicial system.

Youth Treatment

- One pod of the CRC [2,800 square feet] to be dedicated to youth crisis stabilization services
- Family or caregiver needs are supported through both the design and operations of the CRC
- Current estimate for providing additional youth services: **\$2,240,000**

Green Roof System

- Project includes a green [vegetative] roof system in its base bid, as well as an alternate to maximize its area
- Current estimate for green roof system: **\$325,000**



PROJECT DETAILS

LOCATION

DuPage County Campus
Wheaton, IL

ISSUE

Existing building is beyond
useful life

SOLUTION

New building to host SWAP
staff and programming

BENEFIT

Modernized space to provide
improved services to
sentenced offenders utilizing
the Sheriff's Work Alternative
Program

DISTRICTS REPRESENTED

US Representative Districts
3, 4, 6, 8, & 11

IL Senate Districts
4, 21, 23, 24, 25, 28, 33,
39, 41, 42, & 43

IL Representative Districts
7, 41, 42, 45, 46, 47, 48,
49, 50, 56, 65, 77, 81,
82, 84, & 85

County Board Districts
1, 2, 3, 4, 5, & 6

SHERIFF'S WORK ALTERNATIVE PROGRAM BUILDING



PROGRAM HISTORY & INFORMATION

The DuPage County Sheriff's Work Alternative Program [SWAP] was established in 1995 as a viable alternative to incarceration at the DuPage County Jail. Offenders sentenced to SWAP have worked in every municipality in the county performing various community projects at no cost to taxpayers.

Individuals sentenced to SWAP are typically non-violent, first-time offenders. Those found guilty of a violent or sexual offense are not eligible for SWAP. Offenders are generally sentenced to between five and fifteen days in the program that may be completed over a six to twelve month time frame.

The program averages 40 offenders a day who are split into three or four work crews that are transported to work sites by marked Sheriff's Office vans and supervised by specially trained uniformed deputies.

Ninety-five percent of the offenders sentenced to SWAP complete the program, a rate much higher than other community service programs. For this reason the Illinois Criminal Justice Authority has previously called SWAP "the most innovative [alternative incarceration] program to ever come along in Illinois."

New SWAP Building Information

- Existing 3,700 SF building housing the SWAP program is a former service station over 65 years old, and its current conditions are inadequate.
- A new facility for the SWAP program would provide a safer, better equipped space for staff and program participants.
- Current estimate for a new building for SWAP: **\$1,500,000-\$2,000,000**



PROJECT DETAILS

LOCATION

DuPage County Campus
Wheaton, IL

ISSUE

Correctional Facility Doors
have low visibility.

SOLUTION

New cell doors that allow full
visibility of detainees.

BENEFIT

Allows correctional staff to
have full visibility of
detainees and the ability to
fully monitor what is
happening within each cell.

DISTRICTS REPRESENTED

US Representative Districts
3, 4, 6, 8, & 11

IL Senate Districts
4, 21, 23, 24, 25, 28, 33,
39, 41, 42, & 43

IL Representative Districts
7, 41, 42, 45, 46, 47, 48,
49, 50, 56, 65, 77, 81,
82, 84, & 85

County Board Districts
1, 2, 3, 4, 5, & 6

CORRECTIONAL FACILITY CELL DOOR REPLACEMENT



PROJECT HISTORY & INFORMATION

In 2023 the DuPage County Correctional Center had an average daily population of 564 detainees. Many of the detainees coming into the facility suffer from Mental Health and Substance Abuse Issues. The highest rates of self-harm in Correctional Facilities are specific to those who are under the influence of illicit substances or suffer from Mental Illness.

As the Correctional Center was constructed in 1983, old steel doors with small windows are currently utilized to house and monitor these high-risk detainees (shown in the upper left photo). Given the increased percentage of detainees with Mental Health and Substance Abuse issues, the facility is

overdue for a safer, more secure way to house these detainees. Replacement of the current doors with updated equipment to increase visibility of these detainees to staff would be another tool in the fight against detainee self-harm attempts.

New cell doors (shown in the picture above on the right side) would provide staff more visibility to high-risk offenders.

The estimated cost for replacement is \$30,000 per door. Replacing ten (10) doors would meet the current needs.

Total Project Cost: \$300,000.



THE COUNTY OF DUPAGE

TRANSPORTATION

Army Trail Road Bridge.....	12
Fabyan Parkway Reconstruction.....	13

a great place to live, work and raise a family



ARMY TRAIL ROAD BRIDGE OVER THE WEST BRANCH OF THE DUPAGE RIVER

PROJECT DETAILS

LOCATION

Village of Bartlett & Wayne
Township

ISSUE

Existing bridge over the West
Branch of the DuPage River is
approaching end of life

SOLUTION

Replace bridge, including
widening and raising the deck
to accommodate future needs

BENEFIT

Ensure the long term viability
of the County Highway System

COST ESTIMATE

\$8,500,000 (Eligible for State
Funding)

DISTRICTS REPRESENTED

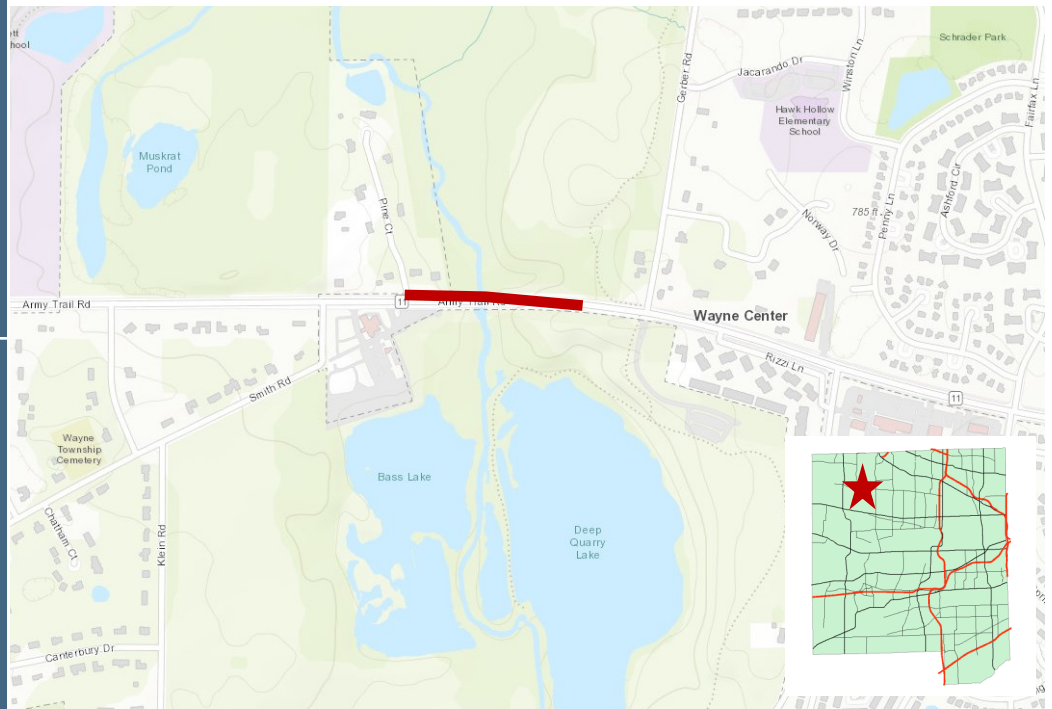
US Senate - Illinois

US Representative Districts
3 & 8

IL Senate Districts 24 & 25

IL Representative Districts
47 & 49

County Board District 6



PROJECT HISTORY & INFORMATION

This project replaces the existing Army Trail Road Bridge over the West Branch of the DuPage River, which has reached the end of its life. The new bridge, which is currently under design, will include a longer bridge span to allow for higher clearance over the river, as well as additional roadway width to improve the overall roadway alignment on Army Trail Road. The wider bridge deck will also accommodate future ADA compliant pedestrian facilities along the County Highway.

Army Trail Road carries more than 18,700 vehicles per day between IL Route 59 and County Farm Road. It serves as a key arterial for east-west traffic in the northwest portion of the county.

The proposed improvements will ensure that the river crossing can meet the needs of the County for decades, including providing adequate future hydraulic capacity and serving motorists and pedestrians alike.

Construction is anticipated to begin in 2025, pending permitting and final engineering.



PROJECT DETAILS

LOCATION

City of West Chicago

ISSUE

Roadway is over-capacity resulting in congestion and operational challenges

SOLUTION

Widen Fabyan Parkway, implement drainage improvements, and add roadway lighting

BENEFIT

Improve the overall mobility and enhance safety for motorists

COST ESTIMATE

\$15,000,000 (Eligible for State Funding)

DISTRICTS REPRESENTED

US Senate - Illinois

US Representative District 3

IL Senate District 25

IL Representative District 49

County Board District 6

FABYAN PARKWAY RECONSTRUCTION— COUNTY LINE TO IL ROUTE 38



PROJECT HISTORY & INFORMATION

This project widens Fabyan Parkway to the ultimate 5-lane width to reduce congestion and improve mobility in the very busy freight and passenger corridor near the County's western border. Fabyan Parkway is a Strategic Regional Arterial and is a critical part of the growing technology and freight industry in the City of West Chicago.

Fabyan Parkway carries more than 16,600 vehicles per day between the Kane-DuPage County line and IL Route 38.

The proposed improvements will not only increase the roadway capacity, but it will better accommodate the mix of trucks and passenger cars, improve drainage, and add street lighting along the busy roadway segment.

The project also includes enhanced access to Technology Boulevard through construction of additional turn lanes and sidewalk and path improvements built to ADA/PROWAG standards.

Construction is anticipated to begin in late 2024, pending permitting, final engineering, and land acquisition.



THE COUNTY OF DUPAGE

FLOOD CONTROL

3rd Avenue Drainage Improvements	15
Nelson's Highview (Newton & Second)	16
Localized Streambank Stabilization	17

a great place to live, work and raise a family



PROJECT DETAILS

LOCATION

Unincorporated Bensenville
Addison Township & Village
Of Bensenville

ISSUE

Localized flooding

SOLUTION

Storm sewers Installation,
culverts, and stormwater
detention

BENEFIT

Reduction in structural
flooding to 30+ residential
properties and overtopping of
roadways

COST ESTIMATE

\$6,500,000

DISTRICTS REPRESENTED

US Representative District 3
IL Senate District 39
IL Representative District 77
County Board District 1

3rd Avenue Drainage Improvements



PROJECT HISTORY & INFORMATION

Located in the Addison Creek Watershed, more than 20 residential structures to the north of 3rd Avenue in unincorporated Bensenville have experienced significant structural flooding for several decades. Existing storm sewer conveys Addison Creek through several private properties. This undersized system cannot convey the large amounts of stormwater runoff collected by the creek during larger storm events. When the capacity of the system is exceeded, stormwater begins to back up and fill multiple depressional areas in the neighborhood, flooding streets and residential structures. Under certain rainfall events, 3rd Avenue and Church Road also overtop, flowing uncontrolled into the adjacent White Pines Golf

Course. The storm sewer system is more than 50 years old and is nearing the end of its serviceable life, requiring rehabilitation or replacement. In addition, the storm sewer is inadequate to convey larger storm events and needs to be upsized. Proposed drainage improvements in the subdivision include replacing and increasing the size of the existing stormwater system, as well as installing a bypass storm sewer to convey flow under a controlled scenario into White Pines Golf Course. These improvements will provide greater flood protection for the area, increasing the level of protection from a 5-year flood to a greater than 50-year flood event, and will increase the estimated service life of the new infrastructure to more than 100 years.



PROJECT DETAILS

LOCATION

Unincorporated Glendale Heights
Milton Township

ISSUE

Multiple properties and
roadways experience
significant flooding during
storm events

SOLUTION

Expansion of detention in the
area and storm sewer
improvements

BENEFIT

The reduction and elimination
of flooding for 20+ properties

COST ESTIMATE

\$300,000

DISTRICTS REPRESENTED

US Senate - Illinois

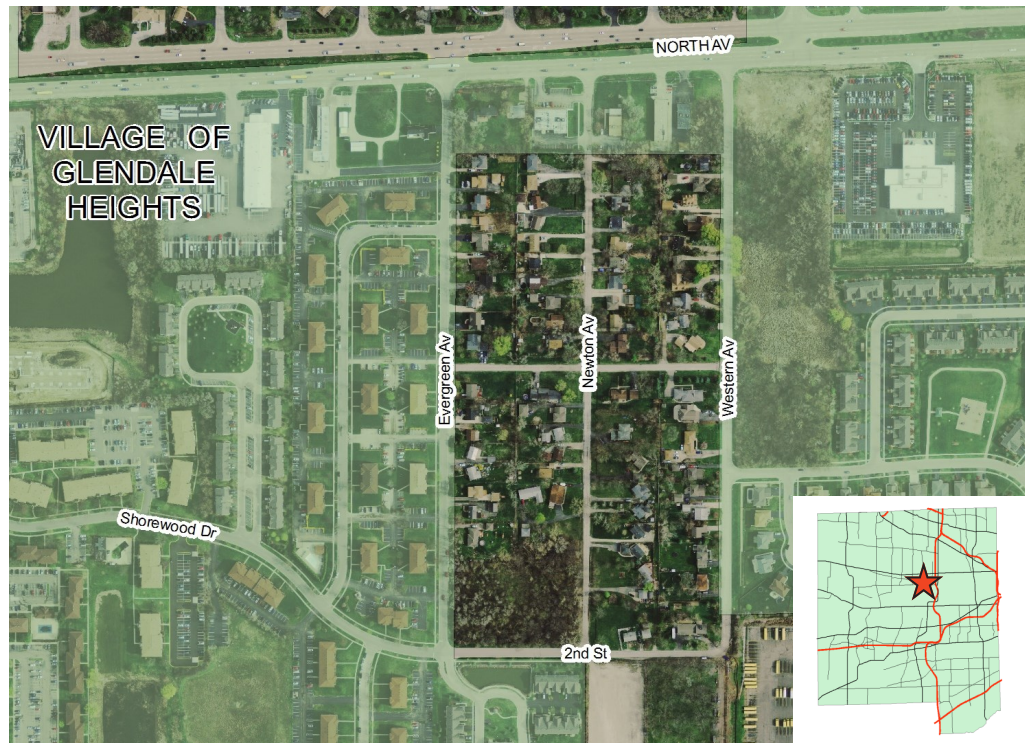
US Representative District 8

IL Senate District 23

IL Representative District 46

County Board District 4

NELSON'S HIGHVIEW (NEWTON & SECOND)



PROJECT HISTORY & INFORMATION

The Nelson's Highview neighborhood in Unincorporated Glendale Heights has an existing storm sewer system and vacant land to control flooding. However, during medium to large storm events, the existing system cannot handle the flows. The excess stormwater causes damage to numerous residential properties and creates road closures, which potentially limits

emergency vehicle access. The solution includes excavating a local detention/retention pond, installing a storm sewer to transport floodwater to the pond and outlet improvements and downstream main lines. In addition, native wetland enhancements and the installation of best management practices could be incorporated to improve natural habitat.



PROJECT DETAILS

LOCATION

Unincorporated West
Chicago

ISSUE

Streambank erosion & water
quality impairments

SOLUTION

Streambank stabilization

BENEFIT

Improved integrity of
streambank near
infrastructure, and improved
habitat for aquatic life

COST ESTIMATE

\$210,000

DISTRICTS REPRESENTED

US Senate - Illinois
US Representative District 8
IL Senate District 23
IL Representative District 46
County Board District 6

LOCALIZED STREAMBANK STABILIZATION



PROJECT HISTORY & INFORMATION

A portion of the West Branch DuPage River in Unincorporated West Chicago is experiencing serious streambank erosion that requires stabilization measures.

The streambank erosion in this area has caused stream widening. This project area is in an urbanized residential location where the stream widening, if allowed to continue, will impact both businesses, roadways and residences. In addition to threatening infrastructure on

unstable banks, streambank erosion presents a water quality issue. Tremendous loads of sediment are entering the stream. Recognized by federal authorities as a major pollutant in the nation's waterways, sediment negatively affects aquatic life within the stream. The sediment also accumulates in a downstream flood control facility, which reduces its storage capacity.



THE COUNTY OF DUPAGE

WATER & SEWER

Public Works & Stormwater Maintenance Building Expansion ..	19
York Township Water Expansion	20

a great place to live, work and raise a family



PUBLIC WORKS & STORMWATER MAINTENANCE BUILDING EXPANSION

PROJECT DETAILS

LOCATION

Unincorporated Darien
Downers Grove Township

ISSUE

The existing maintenance garage is a repurposed water treatment plant originally built in 1970 and is undersized for the current maintenance operations

SOLUTION

Construct a 23,000 square foot addition to the existing garage

BENEFIT

Provide conditioned storage for critical Public Works and Stormwater equipment

COST ESTIMATE

\$6,000,000

DISTRICTS REPRESENTED

US Representative District
4

IL Senate District 41

IL Representative District 82

County Board District 3



PROJECT HISTORY & INFORMATION

The Marionbrook maintenance facility was originally a water treatment plant. The building and tanks were repurposed in the early 1990's to house the Public Works field maintenance operations including supplies and equipment.

Currently, approximately 30 Underground Maintenance, Stormwater Maintenance and Water Operations staff work out of the facility. These groups provide 24/7 emergency service to most residents in DuPage

County, specifically during flooding events and sewer and watermain utility emergencies. The addition to the maintenance garage will provide equipment reliability and readiness to respond. The site layout will provide improved operation efficiencies and allow for indoor, climate controlled storage of critical equipment and supplies. This facility serves 500,000—600,000 residents of DuPage County during flooding and sewer/water system emergencies.



PROJECT DETAILS

LOCATION

Unincorporated Lombard
York Township

ISSUE

Large unincorporated areas of DuPage County that currently do not have access to Lake Michigan water

SOLUTION

Expansion of the existing York Township water system

BENEFIT

Provide reliable drinking water service to up to approximately 4,000 residents in unincorporated DuPage County that are on private wells

COST ESTIMATE

\$500,000 — \$12,000,000

DISTRICTS REPRESENTED

US Representative Districts
6 & 8

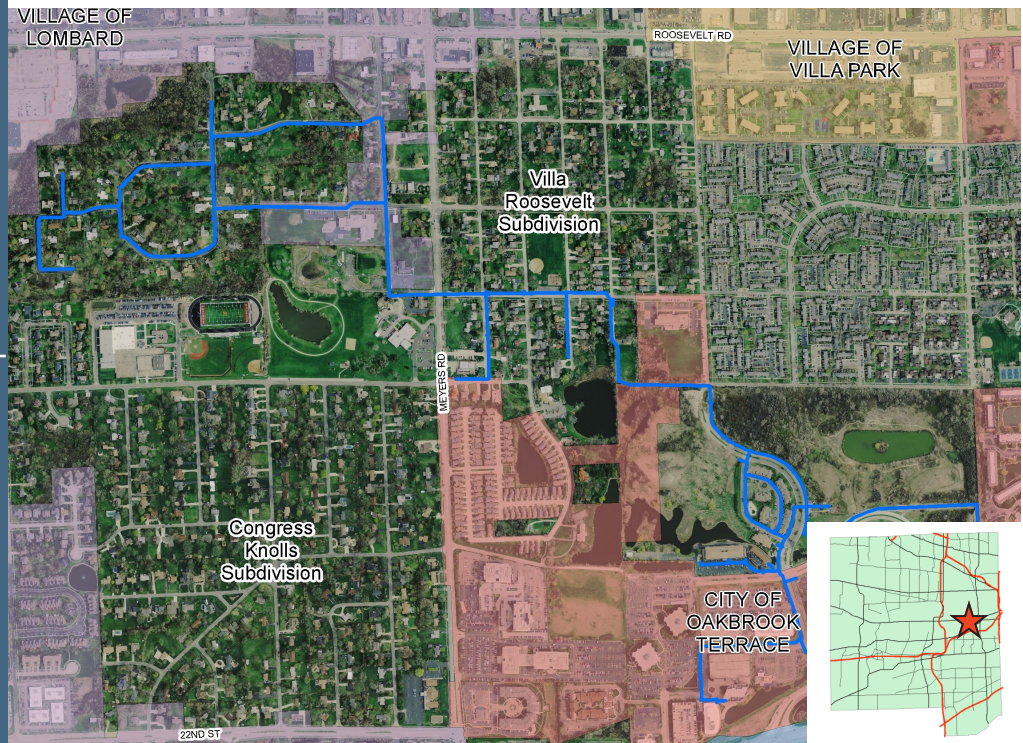
IL Senate District 23

IL Representative District 48

County Board District 2

YORK TOWNSHIP WATER EXPANSION PROJECT

WATER SERVICE EXPANSION



PROJECT HISTORY & INFORMATION

DuPage County owns and operates six (6) water distribution systems to Lake Michigan water to County residents. The York Township System was recently expanded to include unincorporated residents in the vicinity of Meyers Road and Roosevelt Road. The system was constructed with the capacity to include approximately 8,000 additional unincorporated residents which are currently reliant upon private wells. This project would include expanding the water distribution system to

supply water to residents in the Congress Knolls and Villa Roosevelt Subdivisions as well as other adjacent unincorporated residents. It should be noted that the ground water in this area is of particularly poor quality and this project will provide Lake Michigan water to all unincorporated areas in the region. Completion of this project will allow residents the option of connection and water service to water mains throughout the subdivisions.